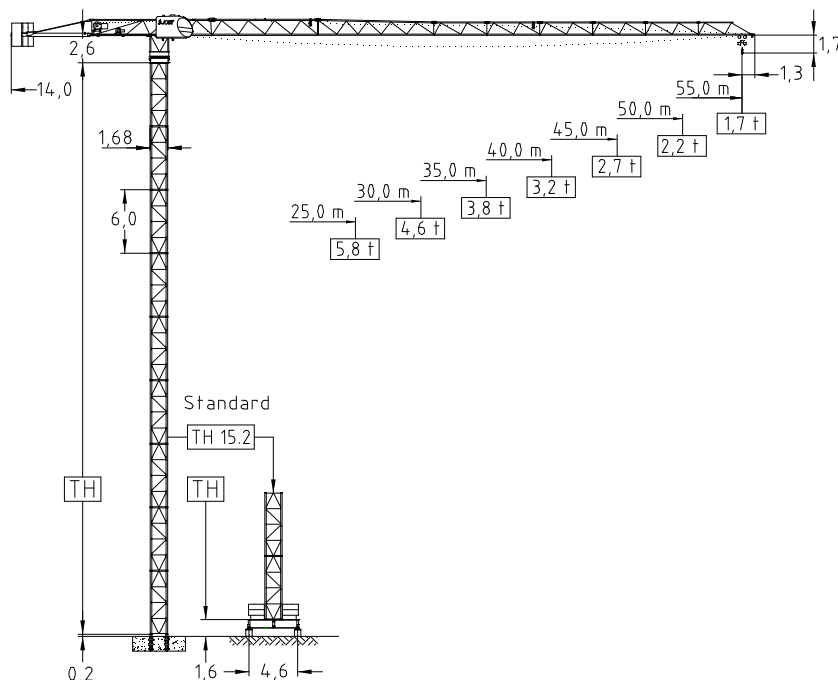


2.1.2 Jib lengths - Tower TH15.2



Tower heights		
Jib (m)	Standard Tower	
	Foundat. TH 15.2	Chassis FC 4,6-15.2
25,0-30,0-35,0	54,0	36,0
40,0-45,0-50,0-55,0	51,0	36,0

ISO 9001 : 2008
EN 14439 : 2008
WIND C 25



Radius & Capacity													
Jib (m)	rope	max. Load		Jib reach									
		t	m	18	20	25	28	30	35	40	45	50	55
55,0	4	4,0	26,9	4,00	4,00	4,00	3,83	3,54	2,95	2,52	2,18	1,92	1,70
	8	8,0	14,5	6,30	5,58	4,30	3,76	3,46	2,87	2,43	2,09	1,82	1,60
50,0	4	4,0	30,0	4,00	4,00	4,00	4,00	4,00	3,36	2,87	2,50	2,20	
	8	8,0	16,2	7,11	6,30	4,87	4,27	3,93	3,27	2,78	2,40	2,10	
45,0	4	4,0	32,0	4,00	4,00	4,00	4,00	4,00	3,62	3,10	2,70		
	8	8,0	17,2	7,62	6,76	5,23	4,59	4,23	3,53	3,01	2,60		
40,0	4	4,0	32,9	4,00	4,00	4,00	4,00	4,00	3,73	3,20			
	8	8,0	17,6	7,84	6,95	5,39	4,73	4,36	3,64	3,10			
35,0	4	4,0	33,5	4,00	4,00	4,00	4,00	4,00	3,80				
	8	8,0	17,9	7,96	7,06	5,48	4,80	4,43	3,70				
30,0	4	4,0	30,0	4,00	4,00	4,00	4,00	4,00					
	8	8,0	18,5	8,00	7,32	5,68	4,98	4,60					
25,0	4	4,0	25,0	4,00	4,00	4,00							
	8	8,0	18,9	8,00	7,47	5,80							

Hoist 30,0 kW FI						
l	t	1,0	1,4	2,2	3,5	4,0
	m/min	90	82	66	50	42
l	t	2,0	2,8	4,4	7,0	8,0
	m/min	45	41	33	25	21

Drum capacity 400,0 m

Power requirement
400V (±10%) - 50Hz

Motor	3,0 kW FI	2 x 5,0 kW	2 x 5,0 kW
t/v	0,0-80,0 m/min	0,77 rpm	25,0 m/min
Power requirement		Hoist 22,0 kW	48,0 kVA
Upper part		Hoist 30,0 kW	60,0 kVA

Shipping		
	Truck	Cont.
Top crane	5	6
Tower 2 unit	1	1
Climbing	1	1
Chassis	1	1

Counter weight	
Block 1	4 x 2,8 t
Block 2	2 x 1,8 t
Total	14,8 t

Ropes		
	D (mm)	N/mm ²
Hoist	12,0	1960
Trolley	8,0	1770

2.1.3 Modular system for jib configurations

JOST Cranes JT-series of topless cranes include cranes JT132.8, JT152.8 and JT182.8.

In order to optimize and facilitate assembly of cranes, JOST has developed a modular system for all possible jib configurations and at the same time has kept the number of parts at a minimum.

In the drawing you can see which jib sections are identical for all cranes.

